

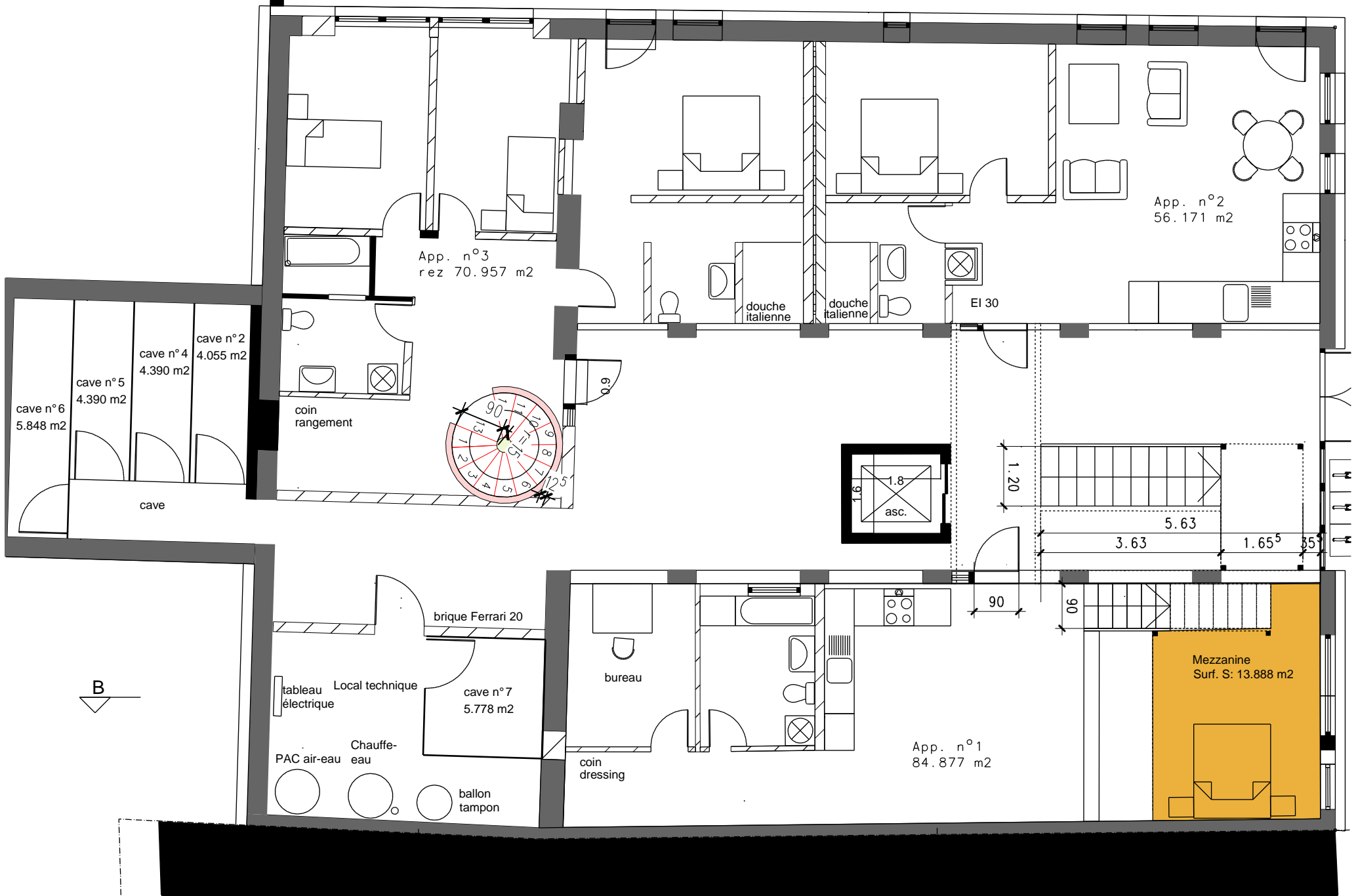
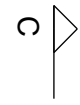
Manoir Bussy 1:100
Rez de chaussée



Terrasse n°2
12 m²



Manoir Bussy 1:100
Mezzanine app.n°1



cave n°6
5.848 m²

cave n°5
4.390 m²

cave n°4
4.390 m²

cave n°2
4.055 m²

cave

App. n°3
rez 70.957 m²

App. n°2
56.171 m²

App. n°1
84.877 m²

Mezzanine
Surf. S: 13.888 m²

Local technique
tableau électrique

Chaudière
PAC air-eau

ballon
tampon

brique Ferrari 20

cave n°7
5.778 m²

bureau

coin
dressing

douche
italienne

douche
italienne

EI 30

asc.

1.20

3.63

5.63

1.65⁵

0.35

90

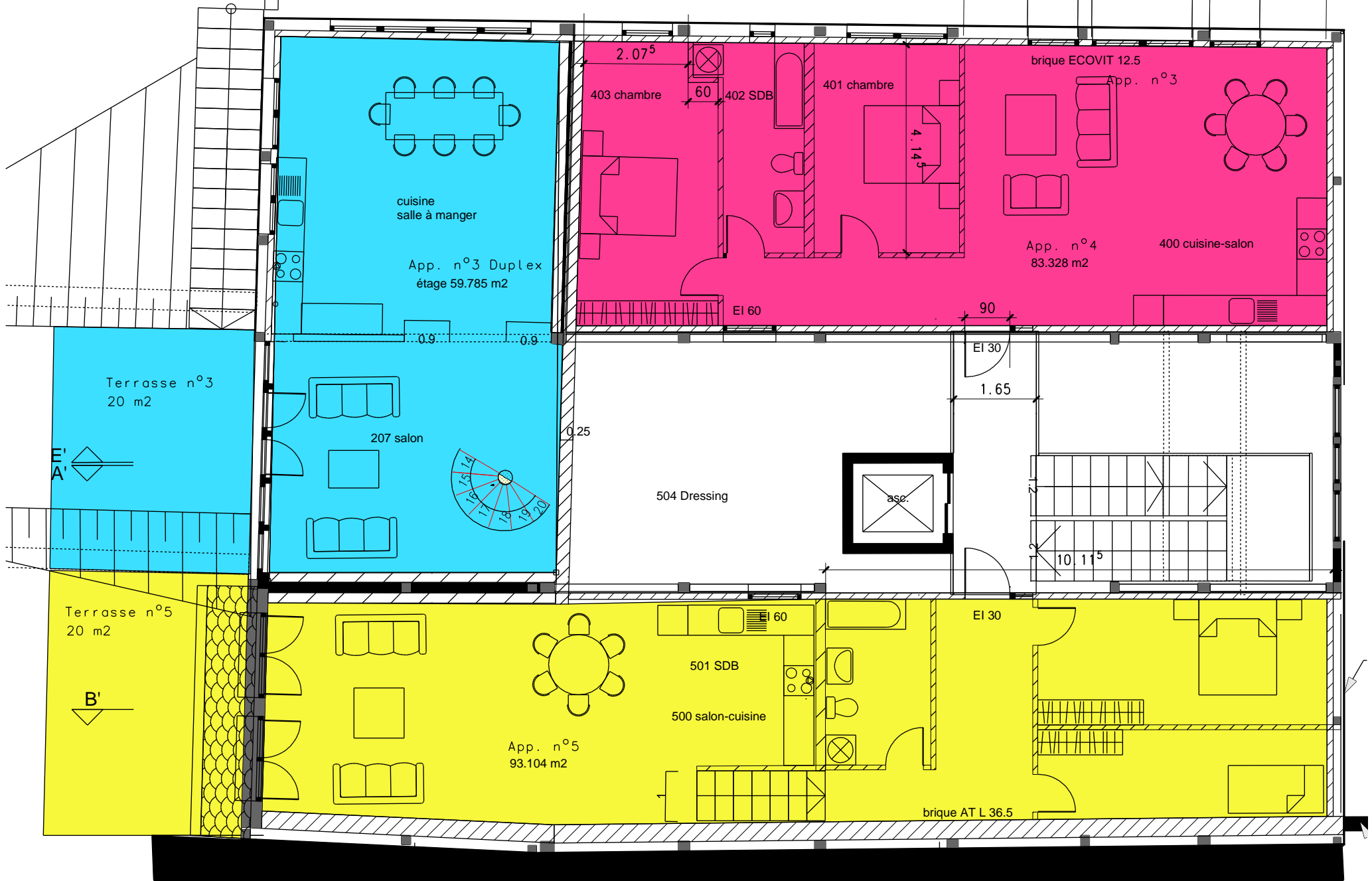
90



Manoir Bussy 1:100
Dalle sur rez

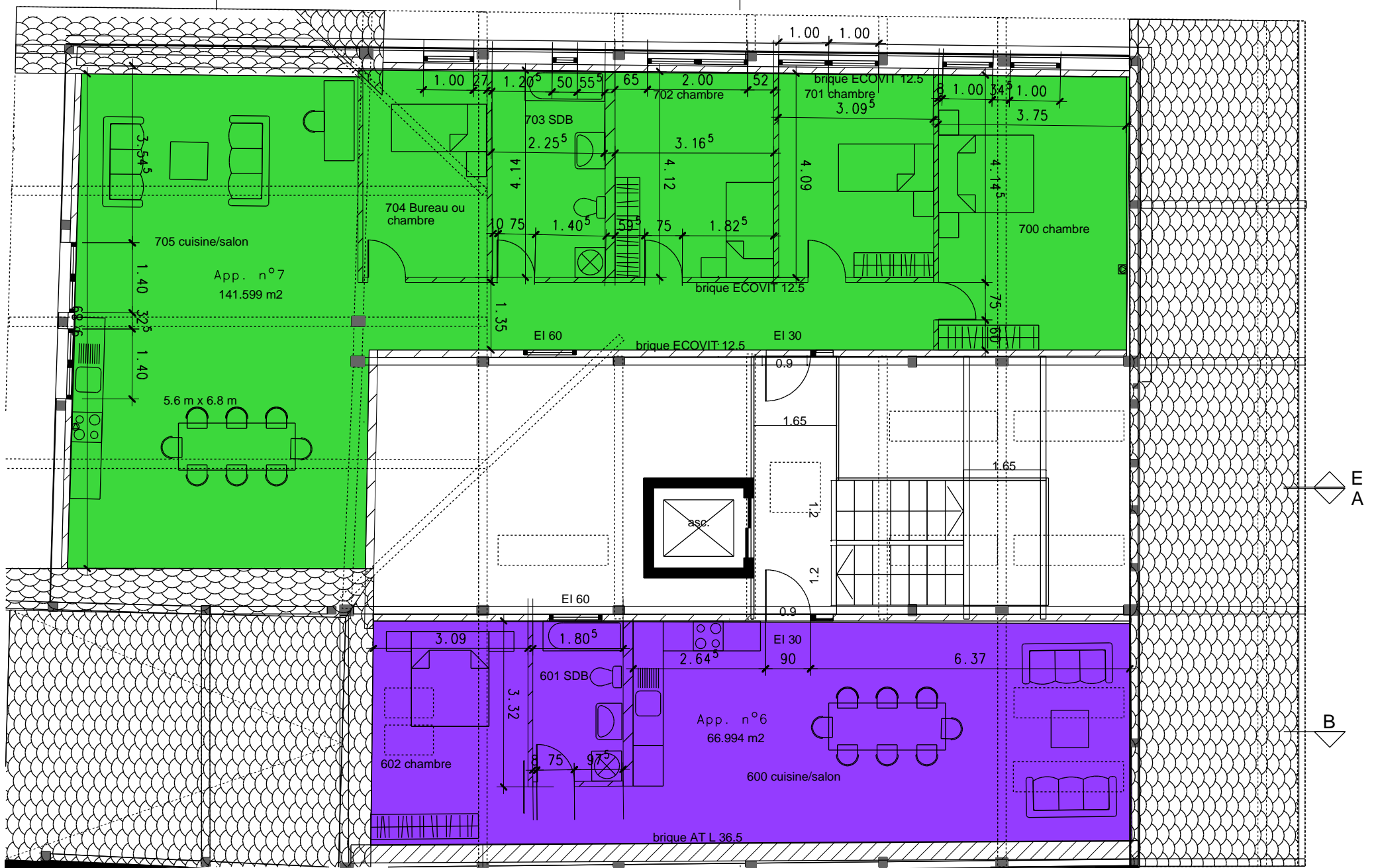


1.27 1.00⁵ 28 2.00 34⁵ 1.00 1.32⁵



Manoir Bussy 1:100
Dalle sur 1er

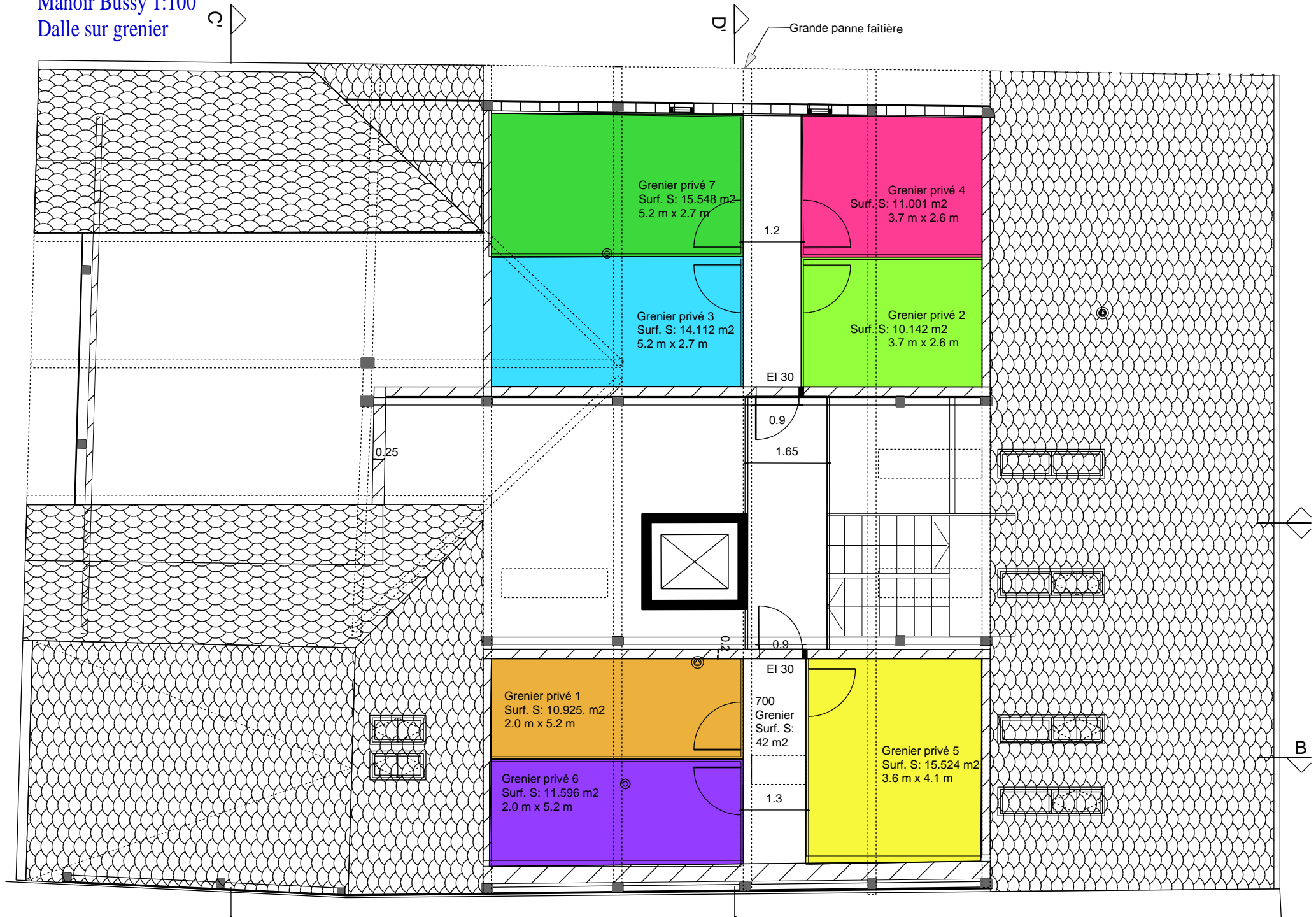
B

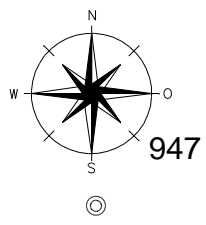


E A

B

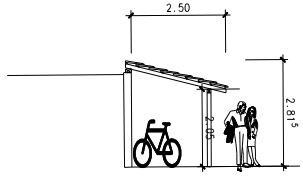
Manoir Bussy 1:100
Dalle sur grenier



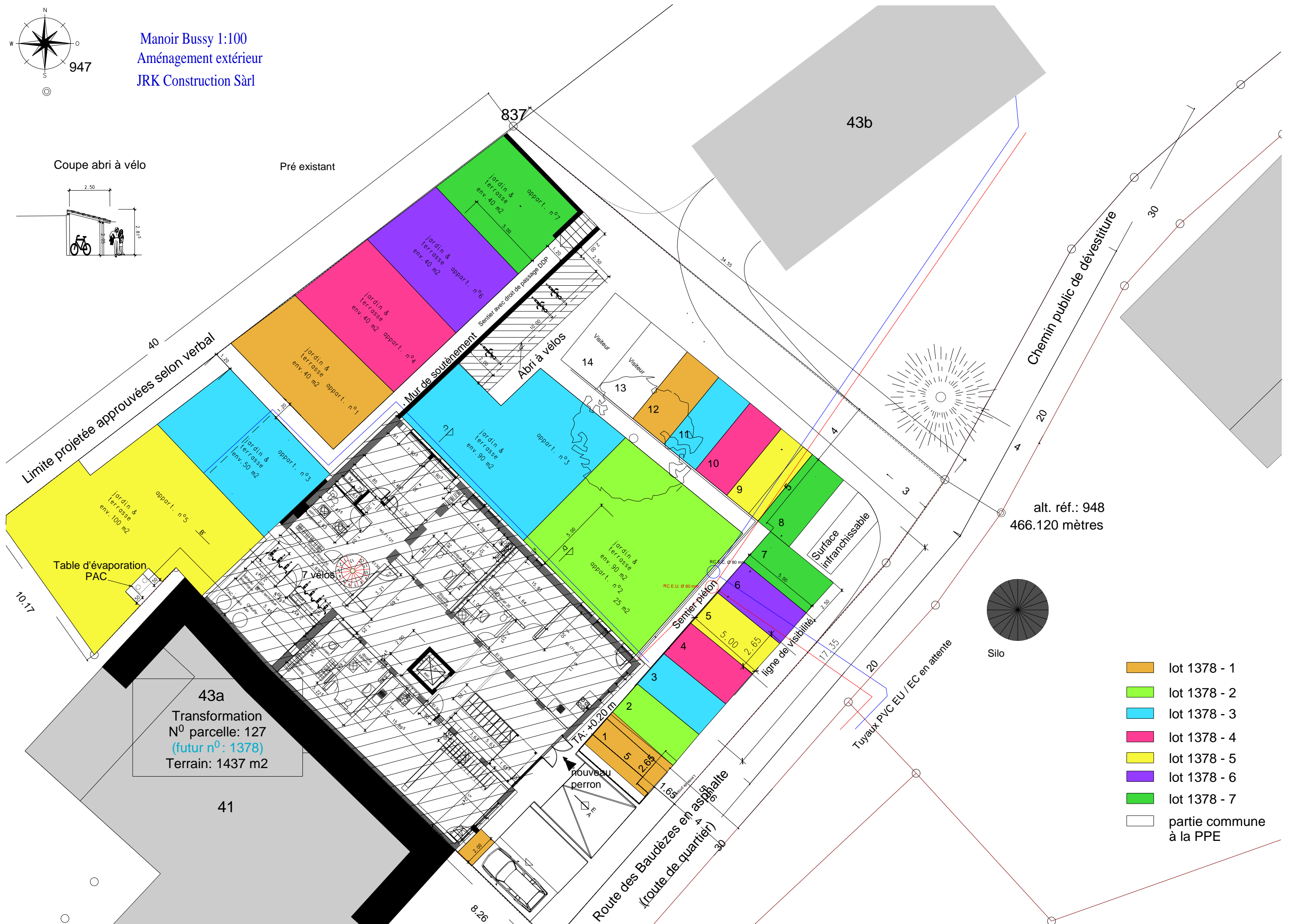


Manoir Bussy 1:100
Aménagement extérieur
JRK Construction Sàrl

Coupe abri à vélo



Pré existant



alt. réf.: 948
466.120 mètres

-  lot 1378 - 1
-  lot 1378 - 2
-  lot 1378 - 3
-  lot 1378 - 4
-  lot 1378 - 5
-  lot 1378 - 6
-  lot 1378 - 7
-  partie commune à la PPE